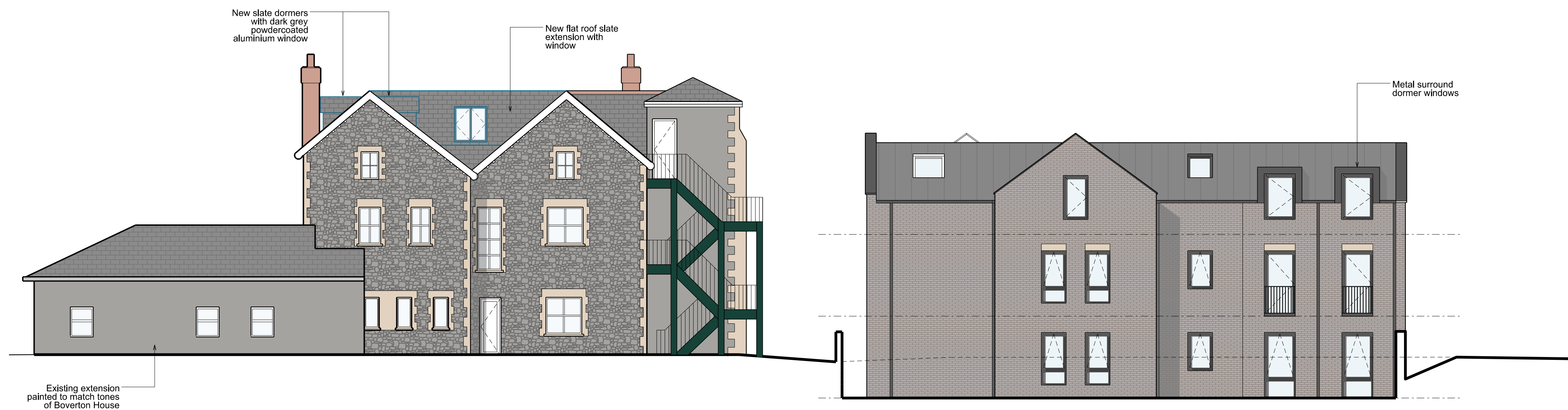


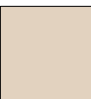
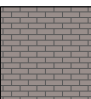

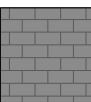





EAST ELEVATION




WEST ELEVATION

KEY

-  Stone
-  Grey brick
-  Metal standing seam roof
-  Slate - used on Boverton House dormers and new flat roof extension
-  New dark grey powdercoated aluminium windows
-  New dark grey powdercoated aluminium windows with Juliet balconies and feature stone lintel
-  New elements on existing Boverton House

NOTES:

REV / 09/03/2022 FIRST ISSUE
DATE DESCRIPTION

0m 1m 2m 5m 

PLANNING APPLICATION

CHILDS SULZMANN ARCHITECTS
BRISTOL
4th Floor Colston Tower
Colston Street
Bristol BS1 4XE
T: 0117 930 0010
W: www.cs-architects.co.uk
E: mail@cs-architects.co.uk
CARDIFF
Tramshed Tech
Pendryris Street
Cardiff, CF11 6BH
T: 02920 108 729
W: www.cs-architects.co.uk
E: mail@cs-architects.co.uk
© COPYRIGHT

DRAWN ZD PROJECT BOVERTON HOUSE
SCALE 1:100 DRAWING PROPOSED ELEVATIONS
@A1 EAST & WEST
DATE FEB'22 NUMBER 17/462/135 REV. /